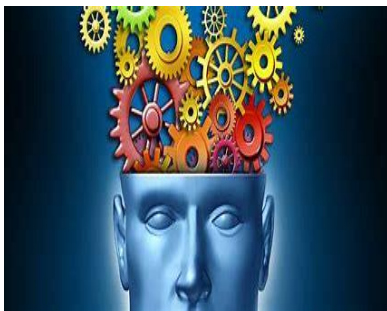


Psychology



Exam Board
AQA

Syllabus number
7182

Psychology



King's
School

“The brain is wider than the sky.”

Emily Dickenson

Course entry requirements

Grade 6 in GCSE English Language and Mathematics.

Why should I study psychology?

Ever wondered if prison really does change criminal behaviour? Or why some people obey instructions and others do not? Or perhaps if the experiences you had as a child have shaped the person you are today? A Level psychology will give you an understanding of the way people think and why they behave in certain ways. You will learn a variety of skills including critical thinking, problem solving and improved communication. Psychology is the study of the human mind and behaviour and therefore it helps support your lead into a wide range of career paths.

What does the course look like?

There are three exams, each accounting for one third of your A Level. The three exams last 2 hours each. The exams consist of multiple choice, short answer and extended writing questions.

Paper 1: Social influence, memory, attachment, psychopathology (33%)

Paper 2: Approaches in psychology, biopsychology, research methods (33%)

Paper 3: Issues and debates and 3 optional units: cognition and development, schizophrenia and forensic psychology (33%)

How will I learn?

The course features a wide range of teaching and learning approaches and methods; from interactive classroom study to conducting social experiments, group tasks to private study and research.

What kind of things might the subject lead me to?

The top seven degree courses taken by students who have an A Level in psychology are:

- Psychology
- English studies
- Sociology
- Business studies
- Teaching
- Sport and exercise science
- Law

Studying psychology at university can give you whole host of exciting career options, including:

- marketing
- business development
- accountancy
- human resources
- forensic psychology
- occupational therapy
- clinical psychology
- nursing
- teaching